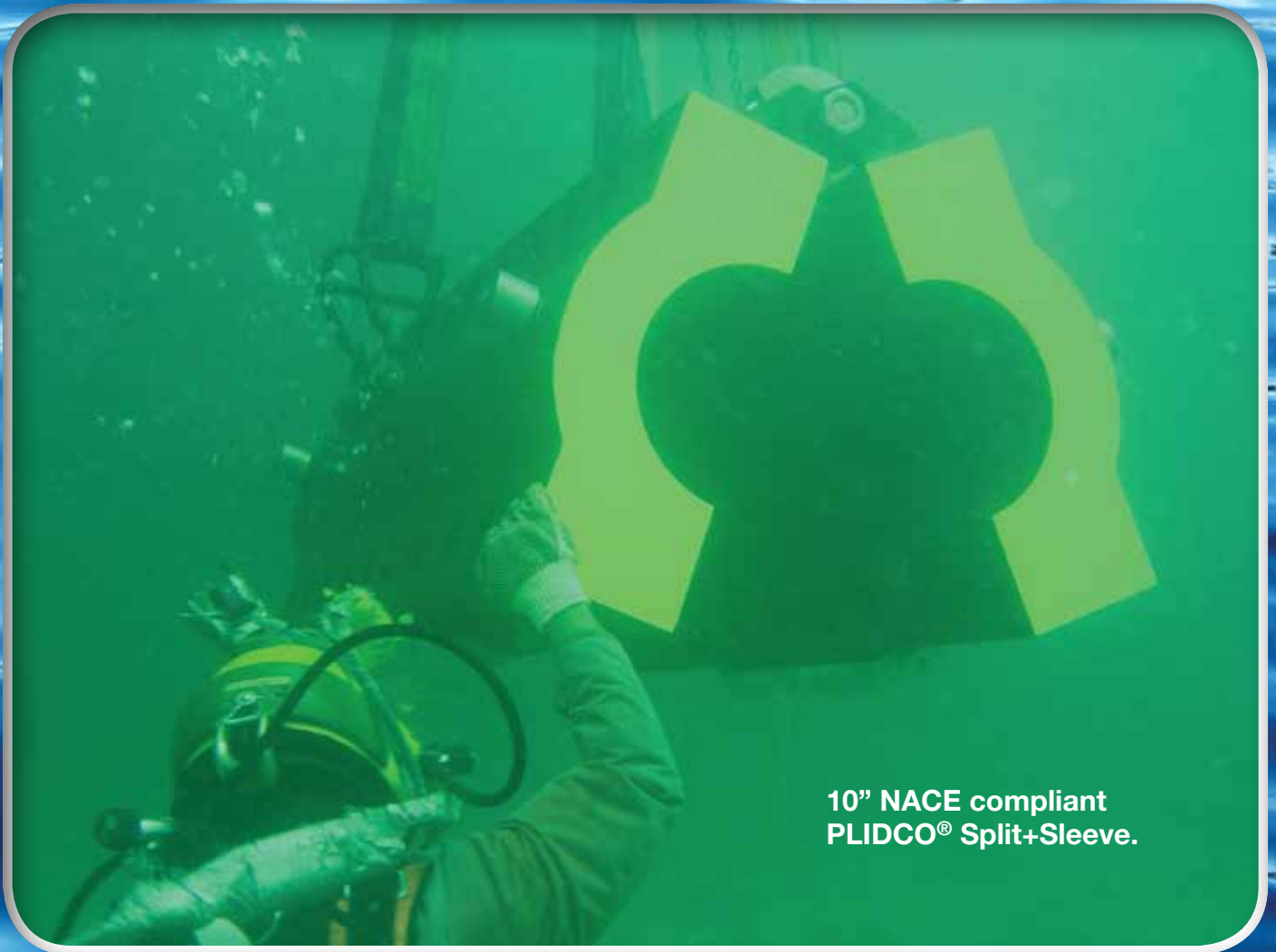


# **PLIDCO®** **OFFSHORE**

**Pipeline repair and maintenance products  
for faster, safer, easier repairs.**



**10" NACE compliant  
PLIDCO® Split+Sleeve.**

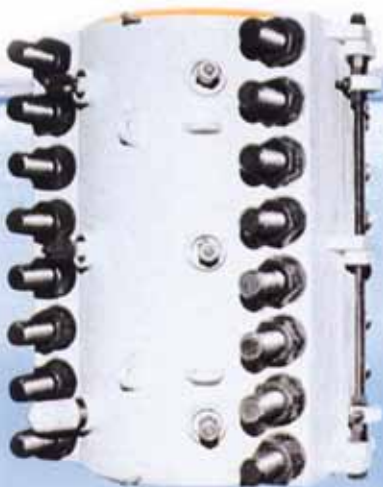
## PLIDCO® OFFERS OFF-SHORE TECHNOLOGY FOR YOUR REPAIR NEEDS

The Pipe Line Development Company (PLIDCO®) pioneered wet technology using mechanical fittings for the repair and maintenance of subsea pipelines worldwide. PLIDCO® fittings are designed for fast, simple installation and take less time than conventional weld-on types of fittings. They are used to seal pipeline leaks, reinforce thin or weakened pipe walls and make subsea tie-ins to existing pipelines at depths suitable for diving. Repairs can be made safely without shut down or with minimum downtime which

avoids costly production losses. Fittings can be welded if specified.

PLIDCO® has a broad line that gives you the widest choice of fittings for your application. Many standard fittings are stocked and available for emergency delivery. Custom designed fittings are developed and manufactured on site based on specific customer needs and can be processed on an emergency basis if necessary.

PLIDCO® is a world leader in pipeline repair



30" x 71" PLIDCO® Split+Sleeve with hinges designed for 3000 psig working pressure.

48" PLIDCO® Weld+Ends® Coupling with 36" sealing area between packing rings and double row of clamping screws.



30" 900# PLIDCO® Flange Repair Split+Sleeve designed for 1440 psig working pressure.

Riser Type Weld+Ends® Coupling simplifies replacement of risers.



PLIDCO® Smith+Clamp repairs pit-hole leaks. It is easily installed even when visibility is limited.





and maintenance, serving the industry for over 60 years. PLIDCO® fittings have been used for virtually every type of application around the world. Our long established guarantee is your assurance of a quality product.

## Off-Shore Fitting Options

**Marine Epoxy Paint** is used for corrosion protection of the steel fittings. White is the standard color to make it more visible for divers. Other corrosion protection paint options are available.

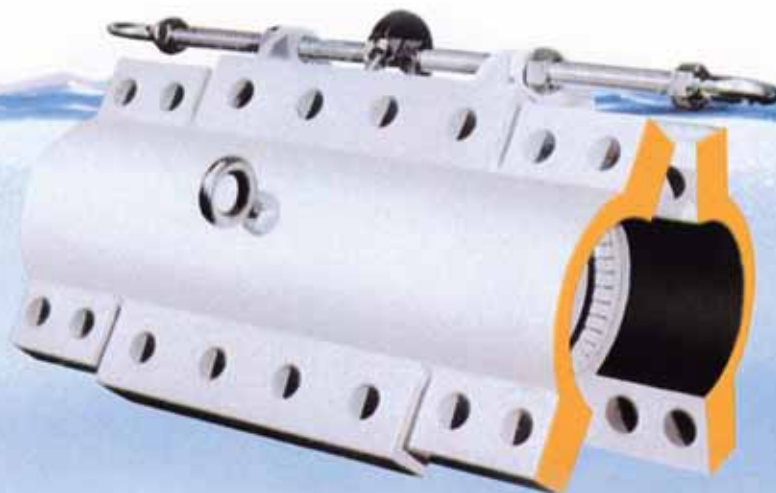
**Hinges** are recommended for ease of installation.

**Vents** are used to force water out of the annulus area between the sleeve and the pipe. They are also used to vent the product while installing a sleeve on a live pipeline and to inject sealant if necessary.

**Plated studs and nuts** provide maximum corrosion resistance in harsh environments.

**Anodes** are used to protect a fitting from corrosion and are attached directly to the fitting. Anodes have an average life of 20 years.

**Special Storage Protection** is available upon request.



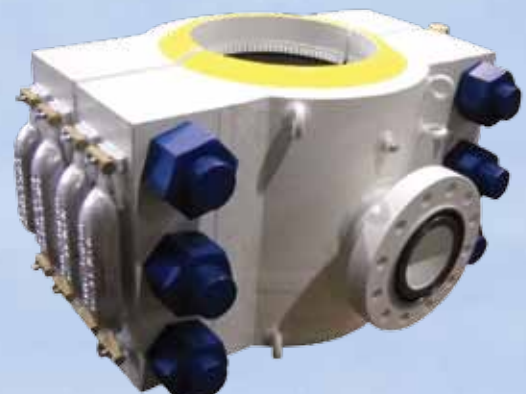
PLIDCO® Clamp+Sleeve for coupling or repairing badly damaged pipe. Packing assures a positive seal and clamping surfaces grip the outside pipe wall to counteract end-pull and axial stresses.



30" PLIDCO® Split Repair "Y" Oversleeve designed for 330 psig working pressure.



4" 600# PLIDCO® Power+Grip Connector shown with marine epoxy paint and coated studs and nuts which are standard.

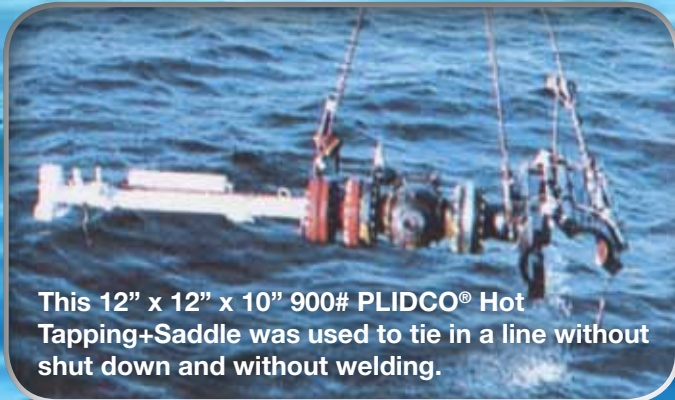


18"x18"x6" 900# PLIDCO® Hot Tapping+Saddle. Fitting includes hinges, marine epoxy coating, xylan coated studs & nuts, vents, and sacrificial anodes.





This 12" x 20' PLIDCO® Split+Sleeve is one of the longest PLIDCO® has manufactured.



This 12" x 12" x 10" 900# PLIDCO® Hot Tapping+Saddle was used to tie in a line without shut down and without welding.

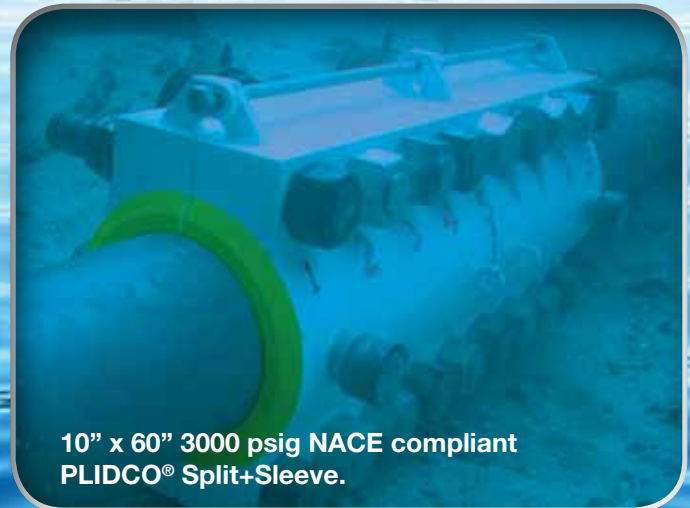


6" x 60" 3000 psig PLIDCO® Split+Sleeve.



Two 32" PLIDCO® Weld+Ends®.

**PLIDCO® fittings save time and money.**



10" x 60" 3000 psig NACE compliant PLIDCO® Split+Sleeve.



8" x 30" PLIDCO® Split+Sleeve returned to PLIDCO® to be reconditioned.



8" x 30" PLIDCO® Split+Sleeve, from the above picture, after being reconditioned.