

## **PLIDCO® TRAINING**

**Install & Re-Pack PLIDCO® Products**



### **Operator Qualification Training**

PLIDCO® offers a fee-based OQ training certification, which conforms with DOT requirements. Each product training program takes approximately 4 hours and class size is limited to a maximum of 20 people. Certification is available for Split+ Sleeve, Weld+Ends®, Smith+Clamp™, and the Flange+Repair Ring. Choose one or choose them all.

#### **The ASME B31Q courses covers the following:**

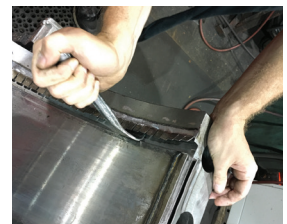
- Detailed power point presentation.
- Step-by-step explanation of the installation instructions.
- Live demonstration on installing a product on a pressurized test stand.
- Hands-on training allowing participants to become comfortable in a controlled environment.
- Question and answer session.
- Written exam and certificate.

### **Re-Packing Class**

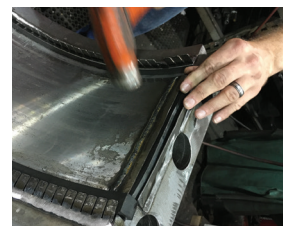
Packing/seal material, that is used to create the seal in PLIDCO® fittings must be replaced, depending upon how long it has been stored or after it has been used and removed from the line. It also may need to be replaced if the fitting was purchased with one type of packing but it has been determined that another would be better suited for the application. Maintenance personnel should be properly trained by PLIDCO® staff before changing the packing.

#### **The ASME B31Q-2006 courses covers the following:**

- Testing the packing to determine if it needs replaced.
- Relieving the GirderRing.
- Removing the packing/seal.
- Inspecting grooves for corrosion, deburr sharp edges.
- Inspecting welds on GirderRings for cracking.
- The basics of determining the right packing/seal per application.
- Inserting new packing/seal and cutting to proper length.
- Bending the GirderRing back down to retain the packing.
- Inspecting the joints where circumferential and longitudinal packing/seals meet.



The GirderRing



Installing the circumferential and longitudinal packing

PIP050 08/19