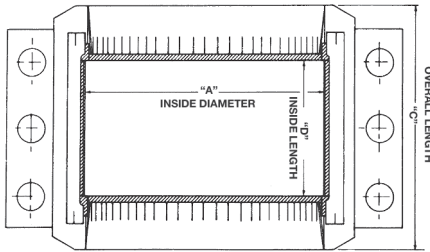


PLIDCO® SPLIT+SLEEVE

Stops the Leak Without Welding

PLIDCO® Split+Sleeves are repair fittings that can be used to seal leaks caused by corrosion or damage on onshore and subsea pipelines. PLIDCO® Split+Sleeves are easy and safe to install. The leak is sealed once the fitting is fully torqued on the line. For a permanent repair, the fitting can be welded to the pipeline while it is under flow. Fittings not welded to the line can be removed, reconditioned by PLIDCO® and put back in the customers safety stock. Fittings are tested to 1.5 times the design pressure. Steel GirderRings prevent displacement & damage of packing during installation. Standard working pressure is 1000 maop. Higher working pressures are also stocked and various lengths are available. Custom emergency repair fittings are an option when a stock fitting is not applicable.

Viton packing is standard.
Buna-N, Silicone and other materials are available upon request.

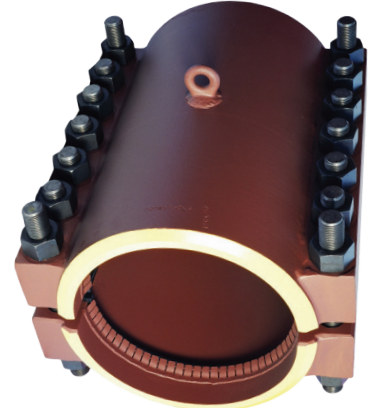


Standard Body Material

- SA-A350 Gr. LF2 Cl1
- SA-A516 Gr. 70
- Standard bolting is SA-A193 Gr. B7 with SA-A194 Gr. 2H nuts

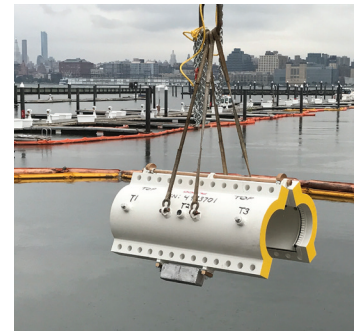
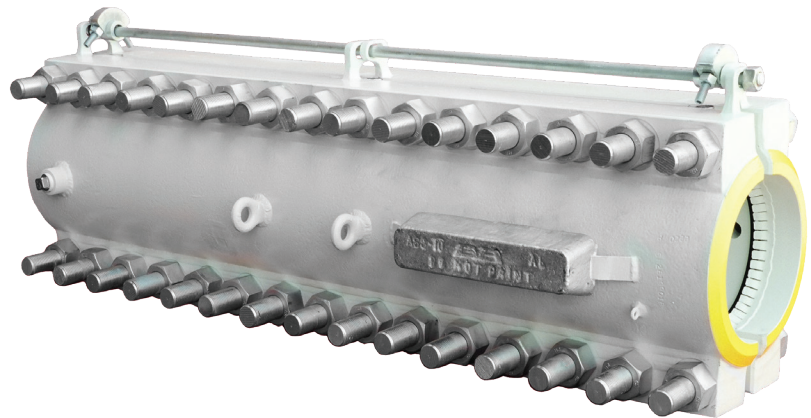
Options:

- Marine epoxy paint for corrosion protection
- Hinges to ease with installation and handling
- Vents available per customer specifications
- Anodes for cathodic protection
- NACE MR0175/ISO 15156 compliant materials



**STANDARD LENGTH
PLIDCO® SPLIT+SLEEVE SPECIFICATIONS
1000 MAOP**

API Pipe Sizes	Inside Diameter "A"	Inside Length "D"	Overall Length "C"	Approx. Weight
Inches	Inches	Inches	Inches	Pounds
1-1/2	2-7/8	5-1/4	8-1/2	26
2	3-1/8	5-3/4	9	23
2-1/2	3-3/8	5-1/4	8-1/2	70
3	4	5-1/4	8-1/2	34
4	5	5-1/4	8-1/2	42
6	7-1/8	5-1/4	9	62
8	9-1/8	5-1/4	10	125
10	11-1/4	5-1/2	10-1/2	147
12	13-1/4	5-1/2	10-1/2	230
14	14-1/2	8	14	385
16	16-1/2	8	14	420
18	18-1/2	8	14	555
20	20-1/2	8	14	580
22	22-1/2	8	14	635
24	24-1/2	8	14	680
26	26-1/2	8	14	865
28	28-1/2	8	14	930
30	30-1/2	8	14	990
32	32-1/2	8	14	1025
34	34-1/2	8	14	1200
36	36-1/2	8	14	1330
38	38-1/2	8	14	1405
40	40-1/2	8	14-1/8	1445
42	42-1/2	8	15-7/8	1805
48	48-1/2	8	15-7/8	2220



PIP046 07/21

Trust the Original.
Trust PLIDCO®

THE PIPE LINE DEVELOPMENT COMPANY

11792 Alameda Drive • Strongsville, Ohio 44149 • USA
+1 440-871-5700 • Fax +1 440-871-9577
pipeline@plidco.com • www.plidco.com

"Working together to make hazardous piping safer"