

## PLIDCO® SMITH+CLAMP™

**Locates & Stops Pit-Hole Leaks With Ease**

The PLIDCO® Smith+Clamp™ is light weight and easy to handle which makes using it to shut off high pressure pit-hole leaks simple and sensible. The exclusive pilot pin makes it possible to locate pit-hole leaks even if they can't be seen which makes the Smith+Clamp™ the product you want to use in dark spaces or on submerged lines. The force screw exerts pressure directly on the sealing cone, rather than applying force with the draw bolts, which reduces the danger of caving in corroded pipe. This product can be used while the pipeline is in service.

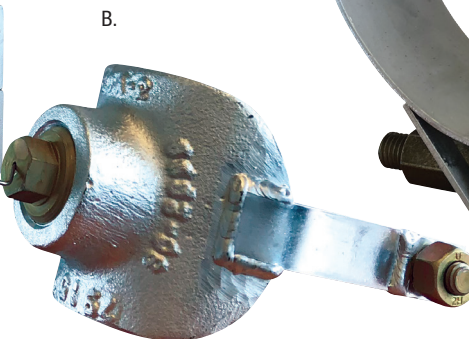
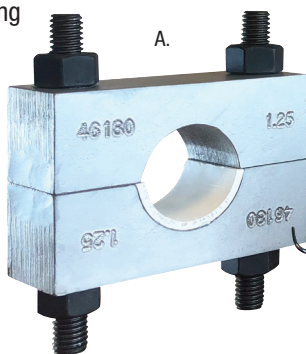
Available in standard sizes 0.5" through 48"; 2000 maop. Custom sizes available upon request.

Sample A - 0.5"-1.5" are split style with a PTFE gasket and mild carbon steel body with 193 B7 studs.

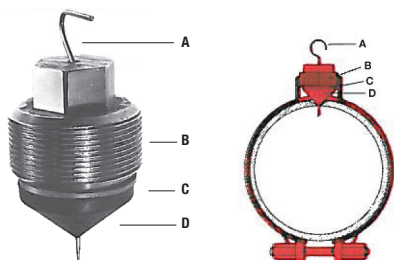
Sample B - 2" & 3" are saddle style.

Sample C - Sizes 4" and larger are band clamp style.

The maximum allowable working pressure (MAOP) of a PLIDCO® Smith+Clamp™ is based on a 1/8" diameter pit-hole. Larger holes, up to 1/2" diameter, can be sealed at reduced pressures. Contact PLIDCO® for pressure recommendations.



C.



- A.** Pilot pin (1/16" diam. stainless steel wire). Goes down through center of force screw and cone, locates hole, guides cone point (D) to trouble spot.
- B.** Steel packing force-screw. Turned with wrench, it forces point of cone into leaking hole. Additional wrenching pressure flattens cone into flat disc shape.
- C.** Thrust washer. Permits force-screw (B) to turn without rotating cone.
- D.** Pointed cone. Serves as leak packing.

**Pressure rating up to 2000 MAOP working pressure, depending upon leak area and temperature.**

- Buna-N is standard packing for the cone. Viton, Silicone and other packing options are available upon request.
- **Standard Body Material:** Mild Carbon Steel

### PLIDCO® WELD+CAP

**Use With the Smith+Clamp for a Permanent Repair**

The PLIDCO® Weld+Cap is used with the PLIDCO® Smith+Clamp™ for a safe and permanent welded pipe repair while the line is in service. The Weld+Cap is designed for working pressures up to 2000 MAOP and meets the latest pressure vessel piping specifications and DOT requirements.

Available in standard 4" through 48" pipe sizes. Special sizes are available upon request.



#### Standard Body Materials:

- SA-A105
- SA-A516 Gr. 70
- SA-A234 Gr. WPC

