

## PLIDCO® HOT TAPPING+SADDLE

**Tap Into a Pressurized Line for Branch Connections or For Plugging Operations Without Welding**



PLIDCO® Hot Tapping+Saddles are designed to ASME code section VIII and meets the intent of API 6H/6X to make *branch connections* on existing pipelines or for *plugging* operations without welding. They are easily installed by simply tightening the side bolts. Steel GirderRings hold seals in place to protect from damage and displacement during installation. When conditions are favorable, PLIDCO® Hot Tapping+Saddles can be permanently welded to the pipeline.

PLIDCO® Hot Tapping+Saddles when used for *plugging* operations are designed to include clamping areas to restrict movement of the fitting when setting the plug. Installation is quick; bolt it on, assemble tapping equipment, perform a hydrotest and proceed with the plugging operation. This product can be reclaimed, reconditioned and used again if it hasn't been welded to the pipeline.

Branches are available in any range of sizes and pressures.  
Threaded, welded or flanged outlets are available.

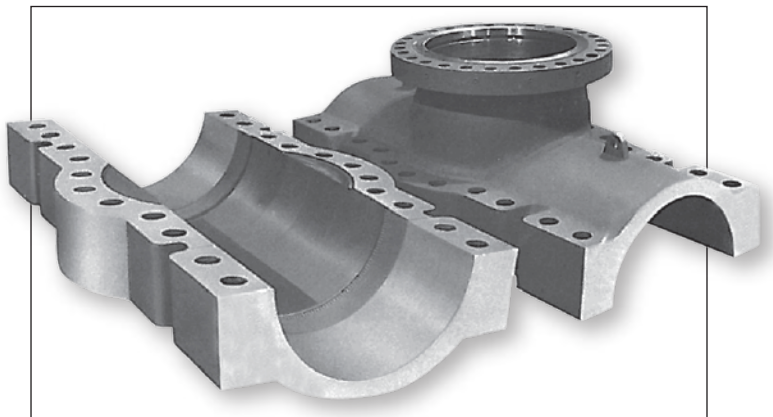
Viton packing is standard.  
Buna-N, Silicone and other packings are available upon request.

### Standard body materials:

- SA-516 Gr 70
- SA-350LF2 Cl1
- SA-352-LCC

### Options:

- Marine epoxy paint for corrosion protection
- Hinges for ease of installation
- NACE MR0175 / ISO 15156 compliant materials



PIP052 07/21

Trust the Original.  
Trust PLIDCO®

**THE PIPE LINE DEVELOPMENT COMPANY**

11792 Alameda Drive • Strongsville, Ohio 44149 • USA

+1 440-871-5700 • Fax +1 440-871-9577

pipeline@plidco.com • www.plidco.com

*"Working together to make  
hazardous piping safer"*