



# **PLIDCO® SLING CLOSURE ASSEMBLY**

## INSTALLATION INSTRUCTIONS

**LANGUAGES:**

CLICK ON LANGUAGE DESIRED

**ENGLISH**



The Pipe Line Development Company  
11792 Alameda Drive • Strongsville, Ohio 44149  
Phone: (440) 871-5700 • Fax: (440) 871-9577  
Toll Free: 1-800-848-3333  
web: [www.plidco.com](http://www.plidco.com) • e-mail: [pipeline@plidco.com](mailto:pipeline@plidco.com)

## **SLING CLOSURE ASSEMBLY INSTALLATION INSTRUCTIONS**

### **!! WARNING!!**

IMPROPER SELECTION OR USE OF THIS PRODUCT CAN RESULT IN EXPLOSION, FIRE, DEATH, PERSONAL INJURY, PROPERTY DAMAGE AND/OR HARM TO THE ENVIRONMENT.

Do not install a PLIDCO Split+ Sleeve with a sling closure assembly until all aspects of the application are thoroughly analyzed. Do not use a sling closure assembly until you read and understand these installation instructions. If you have any questions, or encounter any difficulties using this product, please contact PLIDCO.

### **READ CAREFULLY**

The person in charge of the repair must be familiar with these instructions and communicate them to all personnel involved in the repair crew.

### **Safety Check List**

**Pipeline repairs can be made with the pipeline in operation or shutdown.**

- ☐ Whenever a PLIDCO product is modified in any form, by anyone other than the Engineering and Manufacturing Departments of The Pipe Line Development Company, the product warranty is voided. Products that are field modified do not have the benefit of the material traceability, procedural documentation, quality inspection, and experienced workmanship that are employed by The Pipe Line Development Company.
- ☐ Read and follow these instructions carefully. Follow your company's safety policy and applicable codes and standards.
- ☐ The Sling Closure Assembly Installation Procedure is supplemental to the PLIDCO Split+Sleeve Installation Instructions. All procedures listed in the PLIDCO Split+Sleeve Installation Instructions must be followed.
- ☐ The Sling Closure Assembly Test Report must be included with this procedure. Important information pertaining to factory pre-set dimensions is listed on the Sling Closure Assembly Test Report. Contact PLIDCO if the test report was not included.
- ☐ When repairing an active leak, extreme care must be taken to guard personnel. Severe injury or death could result.

- ❑ During the *Installation* procedure, those installing the PLIDCO product must wear, at minimum, Z87+ safety eyewear and steel toe safety footwear.

## Installation

The purpose of the Sling Closure Assembly is to offer control of the PLIDCO Split+Sleeve as it closes around the pipe and to protect the seals during the installation.

1. Review the PLIDCO Split+Sleeve Installation Instructions prior to assembly.
2. Become familiar with the operation of the adjustable ratchet buckle on the nylon sling.
3. Installation of a PLIDCO Split+Sleeve using the Sling Closure Assembly is optional. If the Sling Closure Assembly is not to be used, the hinge stop(s) must be readjusted such that the sleeve opening is 10% to 20% greater than the pipe diameter. Refer to Figure 1 and Figure 5. Failure to do so may result in damage to the seals. The sleeve opening is typically much greater for use with the Sling Closure Assembly than for use without the Sling Closure Assembly.
4. Verify the hinge stop setting is correct. The hinge stop(s) and nylon sling lengths are pre-set at the factory to allow the hinged assembly to open to the proper distance for installation using the Sling Closure Assembly. Consult the Sling Closure Assembly Test Report for the proper settings if the sling length or hinge stop has been altered.

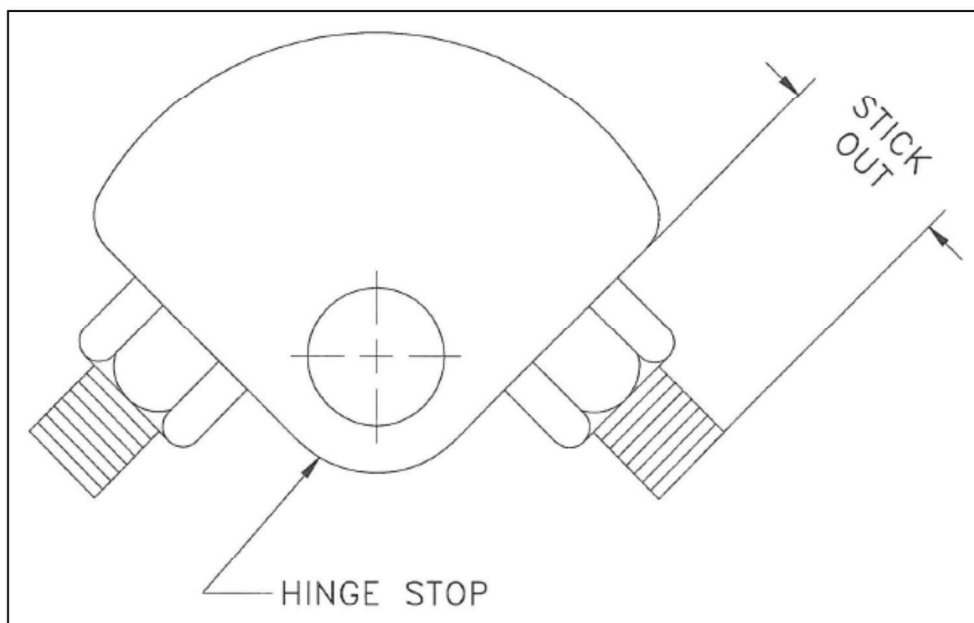


Figure 1

5. Thread the 4 sling pins into the lugs welded on the ends of the Split+Sleeve as shown in Figures 2 & 3. It is easier to install the “L” shaped guard brackets after the sling is placed over the pins.

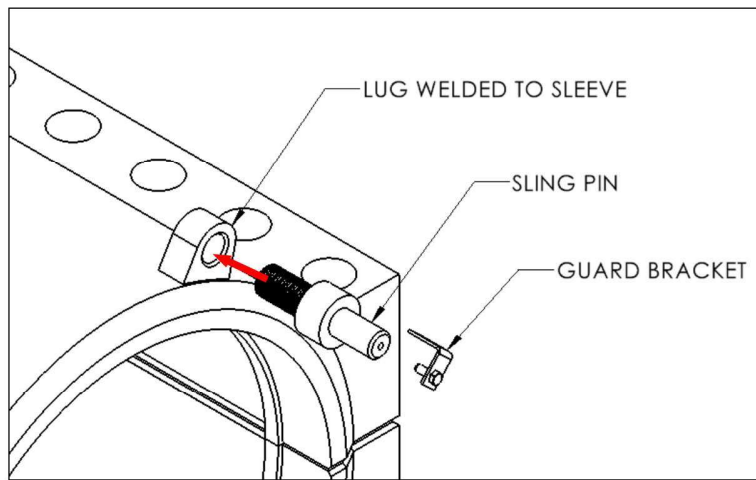


Figure 2

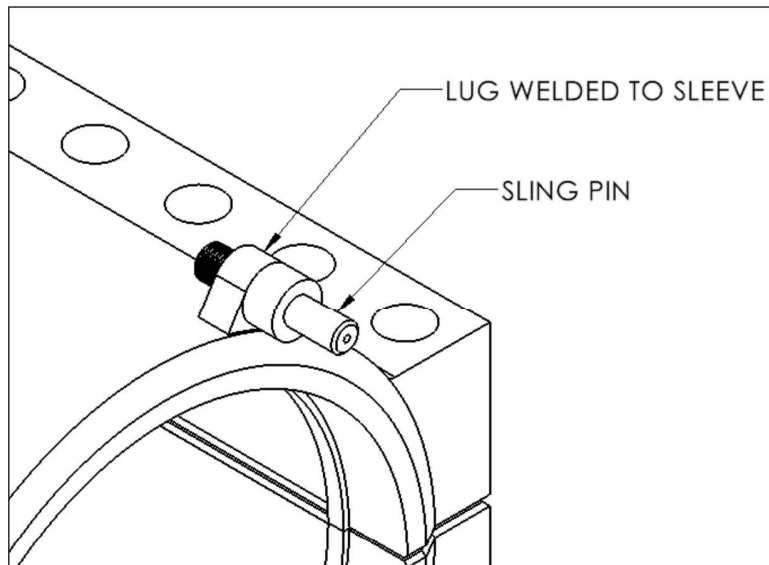


Figure 3

6. Place the nylon slings around the sling pins as shown in Figures 4 & 5 . Install the “L” shaped guard brackets.

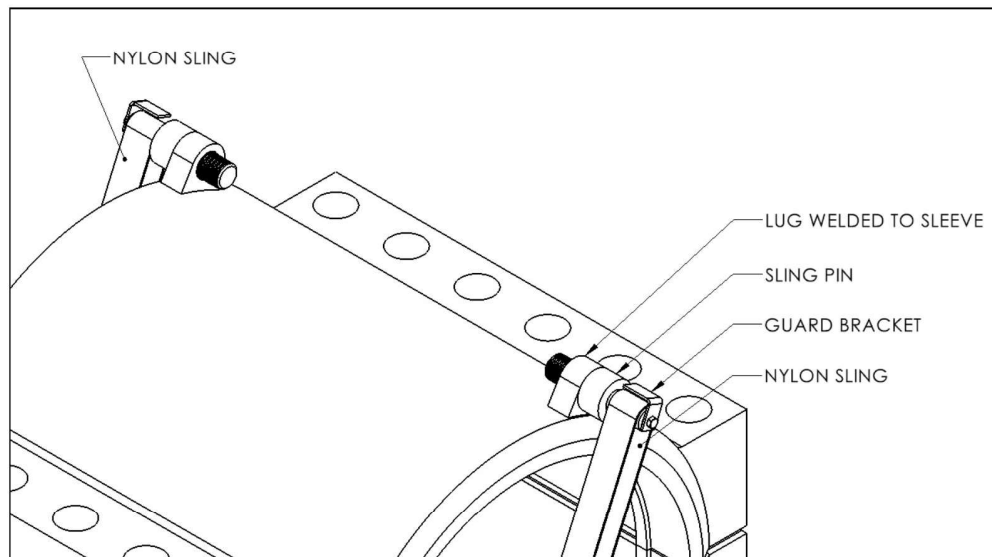


Figure 4

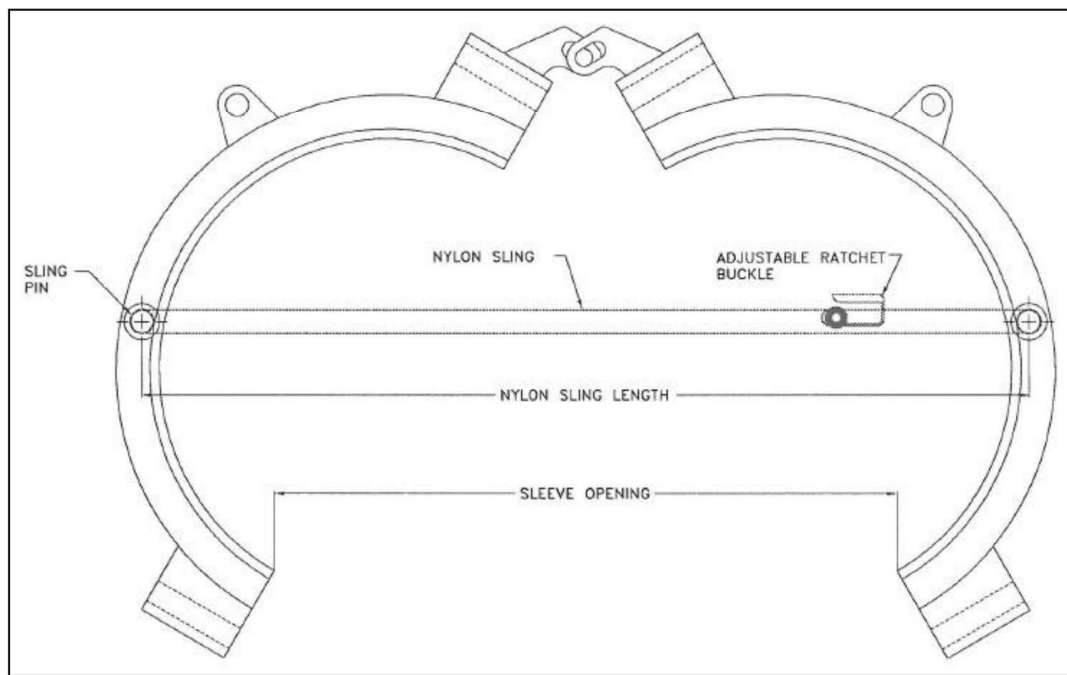


Figure 5

7. Ensure the nylon slings are taut or, if not taut, with a minimum amount of slack when the sleeve is in its open position. This will prevent the nylon slings from getting trapped between the sleeve and the pipe when the sleeve is closed
8. Lower the hinged assembly onto the pipe when the Split+Sleeves is configured as shown in Figure 6. The slings will contact the pipe first and cause the hinged assembly to close around the pipe as shown in Figure 6 and Figure 7.

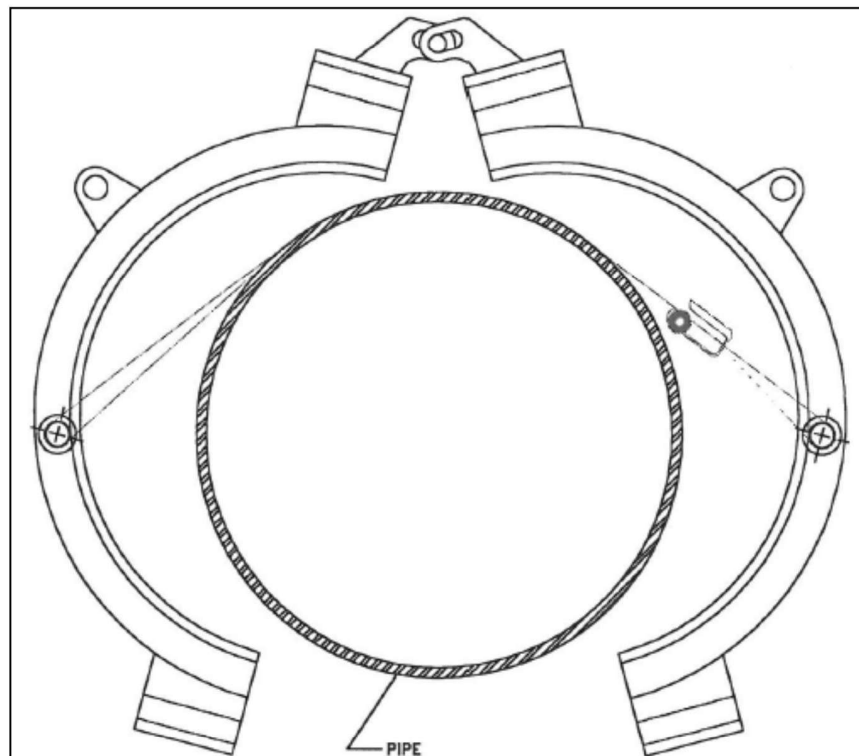


Figure 6

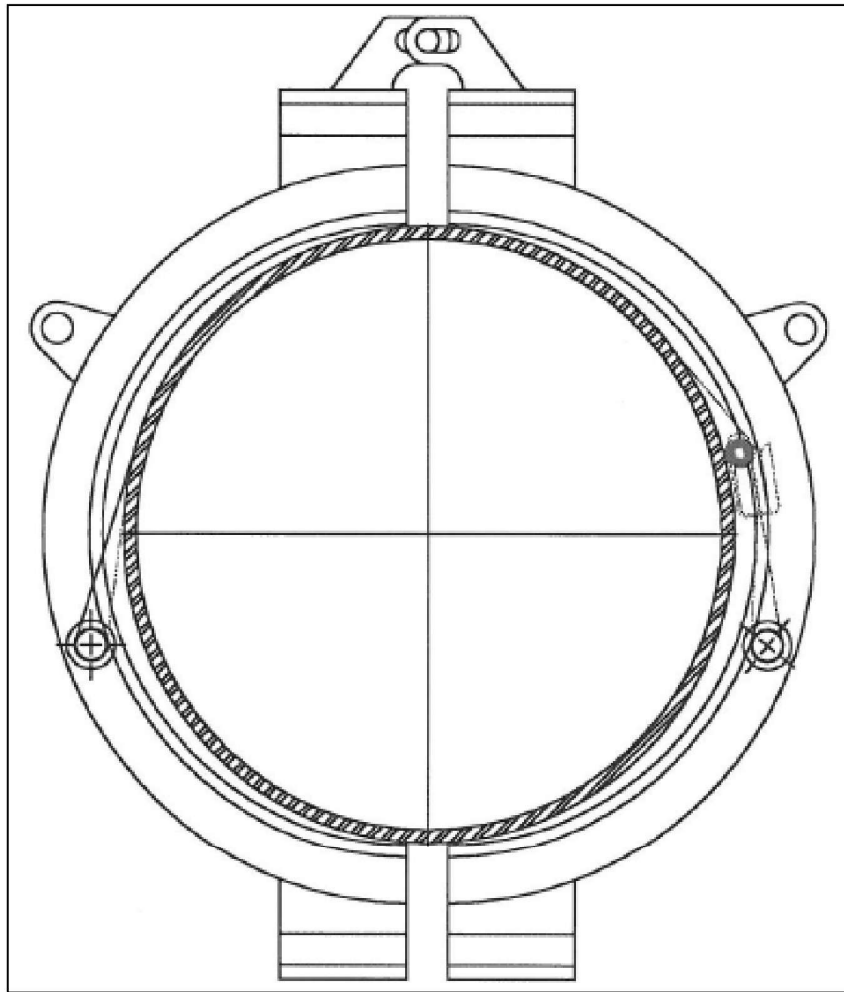


Figure 7

9. Release both of the adjustable ratchet buckles when the hinged assembly is closed. The weight of the sleeve can cause considerable strain in the nylon slings, so be extremely careful and mindful of where your fingers are when the ratchet buckles are released.
10. The faces of each sleeve half should now be parallel and gapped approximately 2 to 7 inches depending on the size of the sleeve. The bolt holes should be aligned allowing the studbolts to be inserted into the bolt holes.
11. If the studbolts cannot be inserted, insert a pry bar between the two sleeve halves near the hinges, being careful not to damage the seals. The sleeve halves can now be maneuvered into a parallel position thus allowing the insertion of the studbolts.
12. Complete the installation following the PLIDCO Split+Sleeve Installation Instructions, IP-021. The nylon slings can be left loosely in place or removed if desired.